

Rittal – The System.

Faster – better – everywhere.

Blue e+ fan-and-filter unit

Greater Power & Efficiency
for your Enclosure Cooling



ENCLOSURES

POWER DISTRIBUTION

CLIMATE CONTROL

IT INFRASTRUCTURE

SOFTWARE & SERVICES



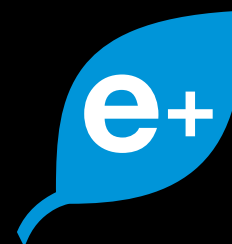
FRIEDHELM LOH GROUP

Blue e+ fan-and-filter units – Best in class



Success is often down to details. Fan-and-filter units are small but vital components in the design and ongoing smooth running of control-gear and switchgear, because they help to keep machines and equipment operating reliably, efficiently and for a longer time.

This calls for power. Exceptional performance. Optimum design and technology. Rittal's Blue e+ fan-and-filter unit sets new standards in enclosure climate control. It was designed specifically to go the extra mile, rather like a tireless runner driven by the determination to become best in their discipline.



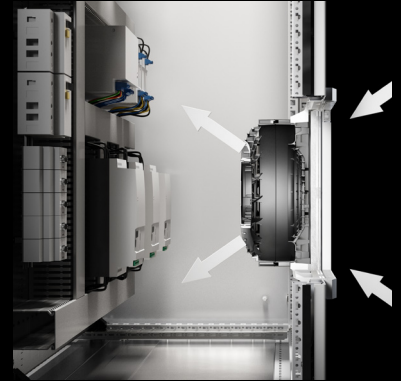
**The classes:
AC/DC, EC and EMC.**

Discover how the Blue e+ fan-and-filter unit can significantly improve your operations, without even breaking a sweat.

Blue e+ fan-and-filter units (AC/DC)

40% 

more air throughput
thanks to the **integrated**
pleated filter



Outstanding air throughput


The endurance of a long-distance runner:

The Blue e+ fan-and-filter combines durability with performance. Together with the pleated filter that is supplied as standard, it boasts 40% greater air throughput than the previous generation of chopped-fibre filters.

This saves energy and money by allowing you to use smaller output classes. The unique diagonal fan technology ensures uniform ventilation inside the enclosure, for reliable protection of your components.

Pleated filter as standard

Perfectly designed for endurance: Outstanding performance demands the very best equipment. The integrated pleated filter extends the service life two- to threefold, thanks to the 6 times larger surface area, coupled with an ingenious design which traps tiny dust particles. The pleated filter guarantees protection to IP 54 and achieves 50% better separation performance. Use of the absorber mat guarantees protection to IP 55. Your added bonus: 80% more air throughput.

2–3  **times**
longer service life
with the **pleated filter**
as standard

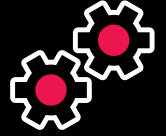


Blue e+ fan-and-filter units (AC/DC)

Easily fitted in the enclosure

As simple as putting on your shoes: With perfect preparation, you can get off to a head start. The fan-and-filter unit snaps easily into the enclosure; no tools are required. What's more, the bayonet fitting ensures that the airflow direction can be easily reversed and without tools.

Particularly user-friendly: The mounting cut-outs, protection rating and output category are all identical to the previous generation of fan-and-filter units, thereby making changeover especially easy.



Tool-free

installation in the enclosure



Save time
with **simple**
filter mat changes

Improved opening mechanism

An athlete's peak performance is always improved by the right hydration at the right time. Opening just as easily as a water bottle, with these fan-and-filter units, maintenance and filter mat changes become child's play. In cases which do not support tool-free opening of the louvred grille (e.g. high-current distributors to IEC 61439-1), the security clip ensures that the required safety standards are met.



Blue e+ fan-and-filter unit

Blue e+ fan-and-filter units with EC technology

EC fan with IoT compatibility

Just like a smooth baton handover in a relay:


A team is more successful when information is passed on reliably and seamlessly.

The IoT-compatible Blue e+ EC fan-and-filter unit guarantees continual and uninterrupted data exchange. This helps to avoid machine downtime and minimize service costs.



Here's why the EC fan-and-filter unit is the best choice:

- Exceptional motor efficiency means 60% energy savings during operation.
- Any malfunction or fault is immediately reported by the alarm to prevent fan failures.
- Multi-voltage capability guarantees worldwide use.

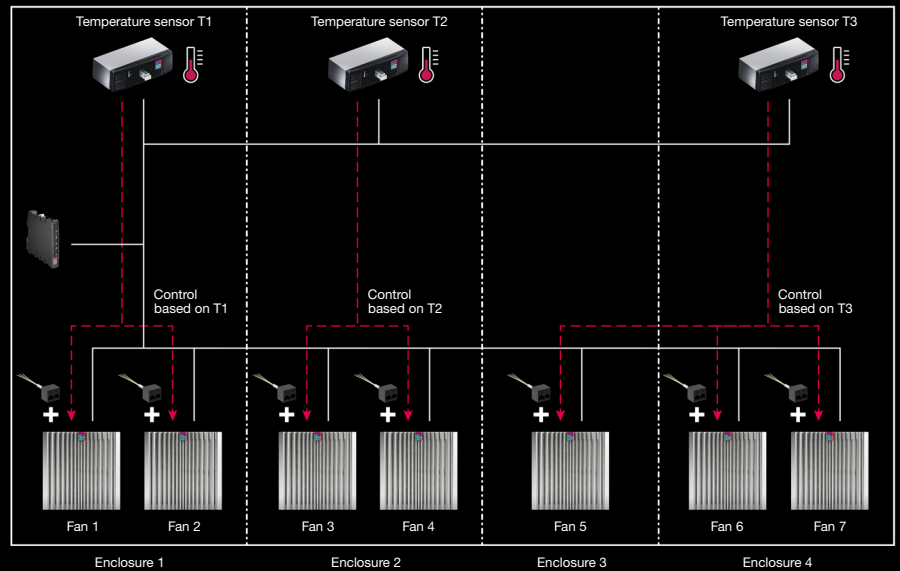
IoT compatibility 
boosts **energy efficiency**
and system security



Blue e+ fan-and-filter units with EC technology


Cost-saving, straightforward and manageable: Up to 8 fan-and-filter units can be operated with just one IoT interface. Individual fan-and-filter units in a bayed enclosure suite may be grouped together with different sensors for, amongst other things, individual temperature management.

Digital activation options



Emergency cooling function

A much-needed boost: When you push a system to its limits, it needs a helping hand to deliver maximum performance. This prompted Rittal to equip the EC fan-and-filter unit with an emergency cooling function which actively counteracts overheating inside the enclosure. As soon as the temperature exceeds the defined tolerance threshold, the fan speed automatically ramps up to maximum which releases up to 40% more air throughput to prevent components from overheating and avoids expensive system downtime.

40% 
higher air throughput
when needed



Blue e+ fan-and-filter unit

Automatic filter cleaning

Catching your breath: Every power phase is followed by a few moments of recovery. That's why our EC fan-and-filter units have automatic filter cleans throughout the day. The airflow direction is briefly reversed to "blow out" the filter. Fine dust particles caught in the filter are removed. This extends the filter service life by 20%, which in turn reduces your maintenance costs.

20%



longer service life
of the filter with automatic
filter cleaning



Demand-based filter maintenance

Analysis like a smartwatch: A healthy system relies on meticulous care. The Rittal IoT interface continuously records the running time and speed of the EC motor and indicates when the next filter change is necessary. With predictive maintenance, you benefit from optimum maintenance planning that reduces your energy and servicing costs.



Blue e+ fan-and-filter unit



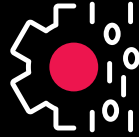
On-demand
maintenance for added
reliability
and lower costs

Blue e+ technology creates lasting and long-term sustainable added value



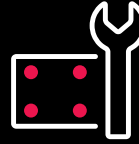
Powerful

With its unique diagonal fan technology and pleated filter as standard, the Blue e+ fan-and-filter unit is simply unbeatable.



Reliable

The Blue e+ EC fan-and-filter unit with its innovative IoT compatibility helps prevent or delay equipment failures.



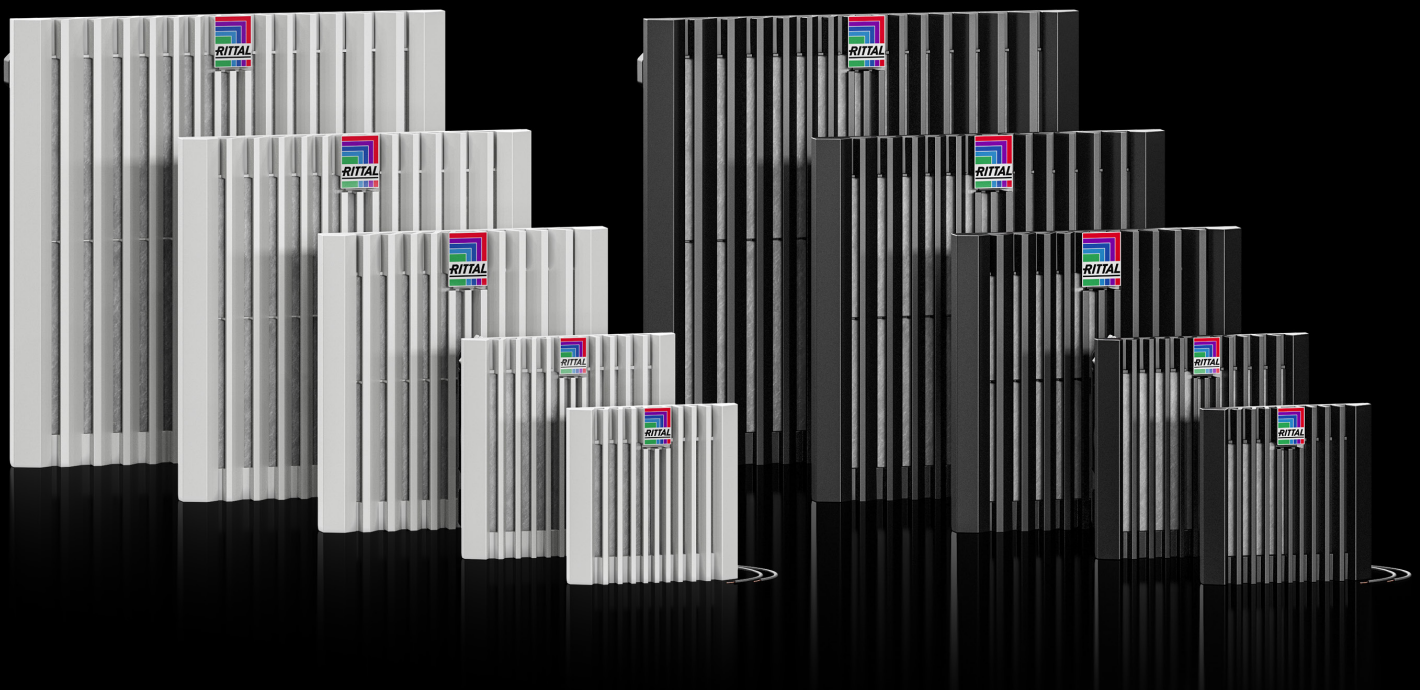
Straightforward & user-friendly

Tool-free assembly and maintenance with the Blue e+ fan-and-filter unit.



Efficient

60% energy savings due to the EC motor in the Blue e+ fan-and-filter unit.



Air throughput

From 15 to 683 CFM
(20 to 1160 m³/h)



Colors

– RAL 7035
– RAL 9005



Options

– AC/DC
– EC
– EMC



IP protection category

– IP 54 with pleated filter
– IP 55 with pleated filter and absorber mat
– IP 56 with pleated filter and hose-proof hood

Rittal Service

Uninterrupted and fault-free processes are the basis for the smooth-running of your production facilities. The Rittal After-Sales Service team are experts in all aspects of servicing, from installation and commissioning, to troubleshooting, repairs and maintenance, through to efficiency optimization and upgrades.

All from a single source

We deliver the right solutions to meet your increasing need for flexibility and short response times.

- Fast, off-the-shelf availability of original spare parts
- Direct contact with our technical customer support team

Manufacturer expertise

Our fully-qualified and specialist service technicians are on hand to assist you with expert knowledge, experience and expertise covering a range of industrial and IT applications:

- Fast, professional troubleshooting
- Risk minimization by avoiding downtime

Always on-hand, always nearby

With 150 service locations and more than 1,000 service experts worldwide, you can rely on rapid international support.

- Comprehensive service network means help is never far away
- Avoid production downtime



Rittal Service teams

are **24/7**
available



Blue e+ fan-and-filter unit

Overview of Blue e+ fan-and-filter units

Blue e+ fan-and-filter units (AC/DC)

| Model No. | Air throughput, unimpeded airflow | Air throughput with outlet filter | Rated operating voltage | Mounting cut-out | Color | Matching outlet filter |
|-----------|-----------------------------------|-----------------------------------|--|------------------|----------|------------------------|
| 3237.700 | 20/25 m³/h | 15/18 m³/h | 230 V, 1~, 50 Hz/60 Hz | 92 x 92 mm | RAL 7035 | 3237.300 |
| 3237.708 | 20/25 m³/h | 15/18 m³/h | 230 V, 1~, 50 Hz/60 Hz | 92 x 92 mm | RAL 9005 | 3237.308 |
| 3237.710 | 20/25 m³/h | 15/18 m³/h | 115 V, 1~, 50 Hz/60 Hz | 92 x 92 mm | RAL 7035 | 3237.300 |
| 3237.718 | 20/25 m³/h | 15/18 m³/h | 115 V, 1~, 50 Hz/60 Hz | 92 x 92 mm | RAL 9005 | 3237.308 |
| 3237.724 | 20 m³/h | 15 m³/h | 24 V (DC) | 92 x 92 mm | RAL 7035 | 3237.300 |
| 3238.700 | 63/72 m³/h | 48/56 m³/h | 230 V, 1~, 50 Hz/60 Hz | 124 x 124 mm | RAL 7035 | 3238.300 |
| 3238.708 | 63/72 m³/h | 48/56 m³/h | 230 V, 1~, 50 Hz/60 Hz | 124 x 124 mm | RAL 9005 | 3238.308 |
| 3238.710 | 63/72 m³/h | 48/56 m³/h | 115 V, 1~, 50 Hz/60 Hz | 124 x 124 mm | RAL 7035 | 3238.300 |
| 3238.718 | 63/72 m³/h | 48/56 m³/h | 115 V, 1~, 50 Hz/60 Hz | 124 x 124 mm | RAL 9005 | 3238.308 |
| 3238.724 | 63 m³/h | 48 m³/h | 24 V (DC) | 124 x 124 mm | RAL 7035 | 3238.300 |
| 3239.700 | 110/125 m³/h | 92/103 m³/h | 230 V, 1~, 50 Hz/60 Hz | 177 x 177 mm | RAL 7035 | 3239.300 |
| 3239.708 | 110/125 m³/h | 92/103 m³/h | 230 V, 1~, 50 Hz/60 Hz | 177 x 177 mm | RAL 9005 | 3239.308 |
| 3239.710 | 110/125 m³/h | 92/103 m³/h | 115 V, 1~, 50 Hz/60 Hz | 177 x 177 mm | RAL 7035 | 3239.300 |
| 3239.718 | 110/125 m³/h | 92/103 m³/h | 115 V, 1~, 50 Hz/60 Hz | 177 x 177 mm | RAL 9005 | 3239.308 |
| 3239.724 | 110 m³/h | 92 m³/h | 24 V (DC) | 177 x 177 mm | RAL 7035 | 3239.300 |
| 3240.700 | 218/191 m³/h | 188/160 m³/h | 230 V, 1~, 50 Hz/60 Hz | 224 x 224 mm | RAL 7035 | 3240.300 |
| 3240.708 | 218/191 m³/h | 188/160 m³/h | 230 V, 1~, 50 Hz/60 Hz | 224 x 224 mm | RAL 9005 | 3240.308 |
| 3240.710 | 218/191 m³/h | 188/160 m³/h | 115 V, 1~, 50 Hz/60 Hz | 224 x 224 mm | RAL 7035 | 3240.300 |
| 3240.718 | 218/191 m³/h | 188/160 m³/h | 115 V, 1~, 50 Hz/60 Hz | 224 x 224 mm | RAL 9005 | 3240.308 |
| 3240.724 | 218 m³/h | 188 m³/h | 24 V (DC) | 224 x 224 mm | RAL 7035 | 3240.300 |
| 3241.700 | 272/280 m³/h | 240/244 m³/h | 230 V, 1~, 50 Hz/60 Hz | 224 x 224 mm | RAL 7035 | 3240.300 |
| 3241.708 | 272/280 m³/h | 240/244 m³/h | 230 V, 1~, 50 Hz/60 Hz | 224 x 224 mm | RAL 9005 | 3240.308 |
| 3241.710 | 272/280 m³/h | 240/244 m³/h | 115 V, 1~, 50 Hz/60 Hz | 224 x 224 mm | RAL 7035 | 3240.300 |
| 3241.718 | 272/280 m³/h | 240/244 m³/h | 115 V, 1~, 50 Hz/60 Hz | 224 x 224 mm | RAL 9005 | 3240.308 |
| 3241.724 | 272 m³/h | 240 m³/h | 24 V (DC) | 224 x 224 mm | RAL 7035 | 3240.300 |
| 3243.700 | 625/716 m³/h | 558/637 m³/h | 230 V, 1~, 50 Hz/60 Hz | 292 x 292 mm | RAL 7035 | 3243.300 |
| 3243.708 | 625/716 m³/h | 558/637 m³/h | 230 V, 1~, 50 Hz/60 Hz | 292 x 292 mm | RAL 9005 | 3243.308 |
| 3243.710 | 625/716 m³/h | 558/637 m³/h | 115 V, 1~, 50 Hz/60 Hz | 292 x 292 mm | RAL 7035 | 3243.300 |
| 3243.718 | 625/716 m³/h | 558/637 m³/h | 115 V, 1~, 50 Hz/60 Hz | 292 x 292 mm | RAL 9005 | 3243.308 |
| 3244.700 | 867/910 m³/h | 715/742 m³/h | 230 V, 1~, 50 Hz/60 Hz | 292 x 292 mm | RAL 7035 | 3243.300 |
| 3244.708 | 867/910 m³/h | 715/742 m³/h | 230 V, 1~, 50 Hz/60 Hz | 292 x 292 mm | RAL 9005 | 3243.308 |
| 3244.710 | 867/910 m³/h | 715/742 m³/h | 115 V, 1~, 50 Hz/60 Hz | 292 x 292 mm | RAL 7035 | 3243.300 |
| 3244.718 | 867/910 m³/h | 715/742 m³/h | 115 V, 1~, 50 Hz/60 Hz | 292 x 292 mm | RAL 9005 | 3243.308 |
| 3244.740 | 867/910 m³/h | 715/742 m³/h | 400 V, 3~, 50 Hz/60 Hz 460 V, 3~, 60 Hz | 292 x 292 mm | RAL 7035 | 3243.300 |



More information about Blue e+ fan-and-filter units can be found here:

[www.rittal.com/
fan-and-filter-units-ac-dc](http://www.rittal.com/fan-and-filter-units-ac-dc)

Blue e+ fan-and-filter units with EC technology

| Model No. | Air throughput, unimpeded airflow | Air throughput with outlet filter | Rated operating voltage | Mounting cut-out | Color | Matching outlet filter |
|-----------|-----------------------------------|-----------------------------------|------------------------------|------------------|----------|------------------------|
| 3240.900 | 218/218 m³/h | 188/188 m³/h | 100 – 240 V, 1~, 50 Hz/60 Hz | 224 x 224 mm | RAL 7035 | 3240.300 |
| 3241.900 | 272/272 m³/h | 240/240 m³/h | 100 – 240 V, 1~, 50 Hz/60 Hz | 224 x 224 mm | RAL 7035 | 3240.300 |
| 3243.900 | 625/625 m³/h | 558/558 m³/h | 100 – 240 V, 1~, 50 Hz/60 Hz | 292 x 292 mm | RAL 7035 | 3243.300 |
| 3244.900 | 867/867 m³/h | 715/715 m³/h | 100 – 240 V, 1~, 50 Hz/60 Hz | 292 x 292 mm | RAL 7035 | 3243.300 |
| 3245.900 | 1161/1161 m³/h | 965/965 m³/h | 200 – 240 V, 1~, 50 Hz/60 Hz | 292 x 292 mm | RAL 7035 | 3243.300 |
| 3245.908 | 1161/1161 m³/h | 965/965 m³/h | 200 – 240 V, 1~, 50 Hz/60 Hz | 292 x 292 mm | RAL 9005 | 3243.308 |
| 3245.910 | 1161/1161 m³/h | 965/965 m³/h | 100 – 130 V, 1~, 50 Hz/60 Hz | 292 x 292 mm | RAL 7035 | 3243.300 |
| 3245.918 | 1161/1161 m³/h | 965/965 m³/h | 100 – 130 V, 1~, 50 Hz/60 Hz | 292 x 292 mm | RAL 9005 | 3243.308 |



More information about Blue e+ fan-and-filter units with EC technology can be found here:

[www.rittal.com/
fan-and-filter-units-ec](http://www.rittal.com/fan-and-filter-units-ec)

Blue e+ fan-and-filter unit EMC

| Model No. | Air throughput, unimpeded airflow | Air throughput with outlet filter | Rated operating voltage | Mounting cut-out | Color | Matching outlet filter |
|-----------|-----------------------------------|-----------------------------------|--------------------------------|------------------|----------|------------------------|
| 3237.800 | 20/25 m³/h | 15/18 m³/h | 230 V, 1~, 50 Hz/60 Hz | 92 x 92 mm | RAL 7035 | 3237.400 |
| 3237.810 | 20/25 m³/h | 15/18 m³/h | 115 V, 1~, 50 Hz/60 Hz | 92 x 92 mm | RAL 7035 | 3237.400 |
| 3238.800 | 53/64 m³/h | 40/47 m³/h | 230 V, 1~, 50 Hz/60 Hz | 124 x 124 mm | RAL 7035 | 3238.400 |
| 3238.810 | 53/64 m³/h | 40/47 m³/h | 115 V, 1~, 50 Hz/60 Hz | 124 x 124 mm | RAL 7035 | 3238.400 |
| 3238.824 | 53 m³/h | 40 m³/h | 24 V (DC) | 124 x 124 mm | RAL 7035 | 3238.400 |
| 3239.800 | 100/115 m³/h | 75/85 m³/h | 230 V, 1~, 50 Hz/60 Hz | 177 x 177 mm | RAL 7035 | 3239.400 |
| 3239.810 | 100/115 m³/h | 75/85 m³/h | 115 V, 1~, 50 Hz/60 Hz | 177 x 177 mm | RAL 7035 | 3239.400 |
| 3239.824 | 100 m³/h | 75 m³/h | 24 V (DC) | 177 x 177 mm | RAL 7035 | 3239.400 |
| 3240.800 | 175/157 m³/h | 130/113 m³/h | 230 V, 1~, 50 Hz/60 Hz | 224 x 224 mm | RAL 7035 | 3240.400 |
| 3240.810 | 175/157 m³/h | 130/113 m³/h | 115 V, 1~, 50 Hz/60 Hz | 224 x 224 mm | RAL 7035 | 3240.400 |
| 3241.800 | 225/245 m³/h | 173/187 m³/h | 230 V, 1~, 50 Hz/60 Hz | 224 x 224 mm | RAL 7035 | 3240.400 |
| 3241.810 | 225/245 m³/h | 173/187 m³/h | 115 V, 1~, 50 Hz/60 Hz | 224 x 224 mm | RAL 7035 | 3240.400 |
| 3243.800 | 540/590 m³/h | 443/497 m³/h | 230 V, 1~, 50 Hz/60 Hz | 292 x 292 mm | RAL 7035 | 3243.400 |
| 3243.810 | 540/590 m³/h | 443/497 m³/h | 115 V, 1~, 50 Hz/60 Hz | 292 x 292 mm | RAL 7035 | 3243.400 |
| 3244.800 | 700/770 m³/h | 535/581 m³/h | 230 V, 1~, 50 Hz/60 Hz | 292 x 292 mm | RAL 7035 | 3243.400 |
| 3244.810 | 700/770 m³/h | 535/581 m³/h | 115 V, 1~, 50 Hz/60 Hz | 292 x 292 mm | RAL 7035 | 3243.400 |
| 3245.800 | 931 m³/h | 728/728 m³/h | 200 V - 240 V, 1~, 50 Hz/60 Hz | 292 x 292 mm | RAL 7035 | 3243.400 |
| 3245.810 | 931 m³/h | 728/728 m³/h | 100 V - 130 V, 1~, 50 Hz/60 Hz | 292 x 292 mm | RAL 7035 | 3243.400 |



More information about Blue e+ fan-and-filter units EMC can be found here:

[www.rittal.com/
fan-and-filter-units-emc](http://www.rittal.com/fan-and-filter-units-emc)

Rittal – The System.

Faster – better – everywhere.

- Enclosures
- Power Distribution
- Climate Control
- IT Infrastructure
- Software & Services

You can find the contact details of all Rittal companies throughout the world here.



www.rittal.com/contact

ENCLOSURES

POWER DISTRIBUTION

CLIMATE CONTROL

IT INFRASTRUCTURE

SOFTWARE & SERVICES



FRIEDHELM LOH GROUP